



West Coast a film makers paradise

L-R, Cameraman and drone pilot, Riaan Laabscher, Mike Phelan, Kyle Archer, Eleanor Phelan, Peter Willems, Mike Hoath (Producer) and 'Buddy' the dog in the foreground.



Just the thing for a show like 'Crystal Hunters', Tasmania's state mineral, Crocoite has long, orange/red, delicate crystals of lead ore

A few kilometres out from Zeehan is a huge expanse of bush that was once home to over a thousand miners and their families. This is Dundas, and there is not much left now that Mother Nature

has taken over the disused township.

The only inhabitants of the once thriving mining town are Mike and Eleanor Phelan who own a couple of mines in the area and two nicer people

you would be hard pressed to meet.

Mike and Eleanor own the 'Dundas Extended', an old lead mine that is now being worked by Mike for Crocoite specimens and is one of several mines

in the area that will feature in a new Discovery Channel show called 'Crystal Hunters'

Continued on page 3



FOR HIM | FOR HER

ESPLANADE, STRAHAN



Letters to the editor...

Here at the Western Echo we love a good debate. If you have a concern, grievance, pet hate or even wish to congratulate someone for doing the RIGHT thing, then this is the place for it. Please note though, that everyone has the right to reply to your letter and we at the Western Echo are under no obligation to publish if things look like they are getting out of hand. We do reserve the right to edit letters for reasons such as clarity and length. Other than that, feel free to have YOUR say. **Editor: Alan Jennison 0488 2782 99 alan@westernecho.news**

General Manager, West Coast Council

I am writing to express my deepest gratitude for the effort and care that your team put into cleaning the ANZAC cenotaph Infantryman statue, as well as the different parks where ANZAC Day services were held. As a proud Queenstown community member and a veteran of the Australian Defence Force, it meant the world to me to see these important symbols of remembrance treated with such respect and honour.

The ANZAC cenotaph Infantryman statue is more than just a statue. It represents the sacrifices and bravery of the men and women who have served and continue to serve our country. It is a reminder of the ultimate price that some have paid in order to protect our freedoms and way of life. So, to see this statue professionally cleaned and restored to its former glory was truly heart-warming.

I also want to express my appreciation for the efforts that were made to maintain the different parks and cemetery where the ANZAC Day services were held. These spaces were both respectful and welcoming to all who attended and did not go unnoticed, and it made for a truly special and meaningful experience.

Once again, thank you for all that you and your team have done. Your efforts have not only made a significant impact on me personally, but on the Queenstown and Gormanston community members in attendance. We are fortunate to have leaders like you who value the importance of honouring our history and those who have fought for our freedoms.

Sincerely,
Johan Mulder

Dear Members of the RSL Queenstown Tasmania Committee.

As a member of the Queenstown community and an Australian Defence Force veteran, I would like to express my heartfelt gratitude to the new committee of for their efforts in delivering a truly memorable ANZAC Day celebration in our town.

I am aware that the circumstances under which the new committee commenced their tenure, and it is a testament to their dedication and commitment that they were able to pull off a successful event in such a short time frame. The ANZAC Day march, service, and wreath-laying ceremony were all conducted with the utmost respect, and the community turnout was a reflection of the effort that was put in.

As a veteran, I know first-hand how important ANZAC Day is for our community, and how it is a time for us to come together to honour the sacrifices of those who have served and continue to serve our country. The new committee's hard work in overcoming some challenges in-time ensured that this day was marked with the reverence and solemnity that it deserves, and for that, I am truly grateful.

I would like to extend my thanks to each and every member of the new committee, as well as to all those who volunteered their time and effort to make this year's ANZAC Day celebrations a success. Your dedication to our community and our veterans is truly admirable, and I am proud to be a part of such a supportive and caring community.

Thank you once again for your efforts, and I look forward to future events and celebrations under your guidance.

Sincerely,
Johan Mulder

UTAS reaching out to the West Coast

It's a busy time of year for anyone involved in education and lots is happening on the West Coast of Tasmania in the education and learning space. **REGIONAL LEARNING PATHWAYS – EXCITING TIMES AHEAD**

The Regional Learning Pathways project is a free, hands-on program where participants can discover more about current and emerging learning and work opportunities on the West Coast. This year participants will also be supported to complete professional skills short courses which will provide work-ready skills in areas employers are looking for across all industries.

The first sessions for 2023 kicked off in Queenstown on 9 May, with more sessions and workshops scheduled for Queenstown in the remainder of May and in Zeehan during June. Planning will then commence on sessions in other locations later in the year.

The program is open to anyone aged over 18 who is living on the West Coast. Participants can also be working casually or part time. All sessions are free, with morning tea and lunch provided.

To find out more about the Regional Learning Pathways program contact Project Officer Christine Gray via email christine.gray@utas.edu.au. Follow Community Taster Courses Tasmania on Facebook to stay up to date with the program.

MINING ROADSHOW ON ITS WAY TO ZEEHAN AND BURNIE

The West Coast of Tasmania has an abundance of mineral deposits and at UTAS, leading research is focussing on unearthing north western Tasmania's considerable critical metals potential. This research is well underway in collaboration with other industry partners and 10 new PhD students have been recruited from around the world to work on this significant project.

UTAS in conjunction with West Coast Heritage and the Study Hub West Coast, will be showcasing a Mining and Geology roadshow to be held at the Gaiety Theatre, Main Street, Zeehan on 7th June 2023. The event will also be replicated at the Cradle Coast Campus on 8th June 2023 with a slightly more broader focus on the north west. Come along and learn about this exciting research and the geological history of the West Coast.

Regional Learning Officer, Belinda

da Martin, says excitement about this event is building with industry and local business keen to be on board as well as budding geology students or those with a passion and interest in rocks and minerals.

Final details are to be released in coming days.

WEST COAST HERITAGE OPEN DAYS – JULY SCHOOL HOLIDAYS, STAY TUNED!

Details are soon to be released for two open days with free entry to the West Coast Heritage Museum.

UTAS in conjunction with West Coast Heritage and the Study Hub West Coast are collaborating to run two open days at the Museum during the July school holidays. The open days will be promoted around the State and include free entry, guided Museum Tours, learning and education activities for children, as well as fun things like a scavenger hunt around the Museum. Children who are part of the Children's University Program will also be able to gain points in their learning passports towards graduation later this year.

Children's University Tasmania helps develop children and young people into adaptable, lifelong learners by providing and celebrating quality learning activities outside the classroom.

Watch this space for more details closer to the holidays!

SPRING INTO EDUCATION – Education and Employment Expo

Study Hub West Coast and UTAS are combining forces for an exciting Careers Expo on the West Coast in Zeehan on 6 September 2023. The careers expo will be open in the morning to West Coast School children years 7-10 and then later in the day to adult learners in the community. The UTAS MILE (Mobile Interactive Learning Environment) Truck will be on location with exciting drone technology and a range of educational experiences which are truly amazing. The day will include opportunities to talk to representatives from industry, business, the university, Defence, Police, TAFE and many others.

Further details are to be released in the coming months by Study Hub West Coast and UTAS.

If you want to know more about tertiary learning opportunities on the West Coast contact University of Tasmania Regional Learning Officer Belinda Martin – belinda.martin@utas.edu.au

PHOTOS FROM THIS AND ALL PREVIOUS EDITIONS OF THE WESTERN ECHO ARE AVAILABLE AS HIGH GLOSS, BEAUTIFUL QUALITY A4 PRINTS. PLEASE CONTACT ALAN FOR MORE DETAILS OR TO ORDER. ALAN@WESTERNECHO.NEWS



WESTERN ECHO

Queenstown, Strahan, Zeehan, Tullah, Rosebery Waratah - The West's own newspaper

WE MEANS COMMUNITY

Editor: Alan Jennison 0488 2782 99 alan@westernecho.news

The Western Echo is available from IGA's and newsagents (as well as some other outlets) in Queenstown, Strahan, Zeehan, Rosebery, Tullah, Burnie, Stanley, Wynyard, Somerset, Ridgley, Smithton, South Riana and Waratah.

127 Main Street, Zeehan, Tasmania 7469.

All published material is published in good faith. 3000 copies printed monthly.



Riding together. Growing together.



Conner Keogh ready to tackle the Mount Owen trails on his new bike.

Our club has been busy in recent months with a range of activities geared towards advancing mountain biking on the West Coast.

One of the highlights has been our continued commitment to supporting young riders on the West Coast. As part of this, we're proud to announce our

sponsorship of Conner Keogh, who has been attending weekly youth rides ("MTB Club") in Queenstown. Conner comes riding with us very week regardless of the weather, helps others on the trails, and attends club meetings with the adults. We wanted to support his progress and enthusiasm by sponsoring him with some gear to help him continue to develop his skills and passion for riding.

We're also excited to announce our collaboration with the Queenstown Lions Club and West Coast Council in developing a pump track in Queenstown. The pump track will be constructed behind the basketball stadium and skate park – truly engraining this area as the town's sports precinct. Not only will this add an additional exercise space for locals, but it will help riders of all ages and abilities fine tune their bike handling skills, creating safer and more skilled riders out on our trails. At a community meeting held earlier in the month the project was met with enthusiasm and support from

kids and community members. Support from the West Coast Council, the Lions Club, Williams Earthmoving and Gaspersic's Quarry, along with plenty of elbow grease from our club volunteers, should see this project come to fruition in the next couple of months. We love working with other community groups, so if you'd like to contribute in any way, please get in touch.

Lastly, we're excited to be participating in a club exchange in May with our friends at Cradle Coast Mountain Bike

Club. The weekend will include a range of social rides on the Penguin MTB trails, including their specy club-built trail 'Iron Tor'. It's a great opportunity to get to know more riders in our area and see what grassroots clubs can develop and achieve within their communities.

If you want to get involved, find us on Facebook or send us an email at info@westcoastmtbtas.com.au.

Alex Burgess-Norris, President.



Local community members attending the pump track community meeting.

A film makers paradise *Continued from front page*

There must be something in the air (or in this case, the ground), as the last few months there have been a few TV and streaming services shows shot on the West Coast.

We are all familiar with the filming that was done around the towns for the upcoming 'Bay of Fires' TV series and we have also had shows like 'The Bridge' and 'Alone', but 'Crystal Hunters' will bring something a bit different to our screens.

I caught up with the producer Mike to find out a bit more about the show.

"We have been filming all over Australia for this show, from the dusty Pilbara region to the tropics of Queensland and now of course, the lush rainforests of western Tasmania." Mike told me.

"The world seems to have gone crazy for crystals and much of that can be blamed on social media spreading the word and pictures but covid certainly played a huge part in this too. People couldn't travel so they looked to the internet and bought from there.

Word soon spread that these crystals and minerals were out there, and they became more and more popular to collect." he said.

"This show and others like it 'Outback Opal Hunters' for example are showing people another way of life, not one suited to everybody but one that can be lived through their screens.

One of the mineral prospectors up in the Pilbara has an amethyst mine and just extracted Australia's biggest amethyst cluster. It's as big as a car!

And we were there to film it, not many people have seen something like that, I certainly hadn't and it's great to be able to share this".

There are a whole other set of challenges here on the west coast as I am sure other film crews have discovered, the wet and the mud for one thing. Haha.

It makes it harder to plan the shoot when you don't know whether it will be pouring with rain or sunny, and that can change in five minutes.

That doesn't matter of course when you are underground in a crocoite mine like the Phelan's but there is not a lot of room in the mine and the walls are covered in mud which makes using a large video camera a bit tricky.

This is completely different to anything we have already filmed, the West Coast is amazing, so fresh, so bright and we are already planning a return trip.

The show's talent, Kyle Archer and Pete Willems are both avid rockhounds, Pete is also a geologist so that helps.

Both want to run their own mine somewhere in Australia and when they heard Mike and Eleanor's crocoite mine was for sale just had to come and have a look and a scratch around in there.

One of the west coast locals, Shane Dohnt played a big role in getting Pete involved in gems and minerals as a kid and things just grew from there."

Filming will continue in Tasmania for another week or so and then off to other parts of the country. Crystal Hunters' will go to air across the world on the Discovery Channel, and on 7Mate here in Australia either late this year or early next and will certainly showcase some of the best from the west.

Story and photos by Alan Jennison



L-R, Cameraman and drone pilot, Riaan Laabscher, Rockhounds Kyle Archer, and Peter Willems with Mike Hoath (Producer)



Mud and tight spaces are not the only thing to worry about when looking through mine workings



But the rewards can make it all worthwhile (the spiders, though large are harmless really)



Telstra is coming to the West Coast

From one local to another, we're here to support you and help our customers stay connected. From phone plans to the latest devices that will suit your needs. Our team are ready to help you make the most of technology.

Talk to your local Telstra experts at our West Coast tour

MAY
15-18

- Queenstown - 15th May 10am-4pm - Miners Siding car park
- Strahan - 16th May 10am-4pm - Main Car Park, Esplanade
- Zeehan - 17th May 10am-4pm - Howards Park
- Rosebery - 18th May 10am-Noon - Cnr of Agnes & Arthur Streets
- Tullah - 18th May 2pm-4pm - Farrell St Car Park



Rare minerals mining, critical for Tasmania's future



This key critical mineral is also produced at the Kara mine near Hampshire and forms part of the world-class tin-tungsten deposit at Mount Lindsay, currently being worked on by Venture Minerals.

Concentrations of key minerals like tungsten in Tasmania create opportunity for further downstream processing on-island.

Tungsten. Tin. Copper. Nickel. Rare earth elements. Demand for these minerals and more is projected to skyrocket for renewable energy and battery technology, and defense manufacturing in the coming years.

With critical minerals now regularly in the media, I'm increasingly asked by Tasmanians what they are and is there opportunity for our State.

For Tassie, the good news is that several of these minerals are found right here, on our own doorstep, with huge potential for new investment.

A critical mineral is a metallic or non-metallic element that has two characteristics – it is essential for modern technologies, economies or national security and there is a risk that its supply chains could be disrupted.

Critical minerals are used in advanced technologies including fiber optics, rechargeable batteries, medical imaging, defense technology, communication devices and computers.

There is every chance that if you're reading this article on your phone, computer or laptop, that critical minerals are helping power that technology.

The Australian Government has listed 26 resource commodities as critical minerals and is currently reviewing the list to ensure it is contemporary.

Many of the minerals currently listed are found in Tasmania with these resources already supporting new jobs and investment.

The Dolphin mine on King Island is Australia's primary source of tungsten, hosting the highest-grade mineral deposit of significant size in the western world.

Our world-leading renewable energy profile and experience in metals processing - think Nyrstar or Bell Bay - only strengthens our hand.

Besides tungsten, Tasmania also has quantities of antimony and rare earth elements that are the subject of current exploration activity on the West Coast and Northern Midlands respectively.

And then there are the critical minerals associated with existing operations. These include cobalt from the Avebury nickel mine or germanium and indium associated with Rosebery's zinc ore.

Already, there has been interest from existing mines and processors around extracting these key minerals to meet our strategic and technological needs.

And to cap things off, critical minerals lists in other countries include minerals currently being mined in Tasmania such as zinc, nickel and tin.

These minerals are critical to bring about an electrified future, only creating further opportunity for Tasmania.

All of this is why Our Government is developing a Tasmanian Critical Minerals Strategy, to best position our State to take advantage of new opportunities.

The strategy will help identify on-island resources, drive investment and grow jobs, particularly in our regions, while preserving our environment and ensuring a clean energy future.

Already, we have amended the guidelines for our popular Exploration Drilling Grant Initiative (EDGI) scheme to specifically encourage exploration for critical minerals.

Tasmania is uniquely positioned to help bring about a new global future. Let's step up and play our part.

Labor boost for local roads

Senator for Tasmania, Anne Urquhart, today announced a further \$2.4 million in Federal Labor funding for eight local councils in Tasmania's North West, West Coast and King Island.

Anne Urquhart, Duty Senator for Braddon said "This funding is another big win for our community. The North West, West Coast and King Island deserve strong Federal investment to keep pace with community needs. "We all know the difference that safe roads make to people who live in Braddon and often travel long distances to work, study and visit loved ones."

This brings Federal Labor funding announced for these councils to over \$6.5 million this year – supporting them to deliver priority road and community infrastructure projects, with long lasting benefits for local communities.

The funding is being delivered as part of the Albanese Labor Government's election commitment to provide an extra \$250 million dollars for road projects in rural, regional and outer-urban areas under Phase 4 of the Local Roads and Community Infrastructure Program.

Local Councils will receive the fol-

lowing additional funding:

Central Coast Council	\$445,068
Circular Head Council	\$463,327
Burnie City Council	\$279,289
Devonport City Council	\$292,295
King Island Council	\$239,110
Latrobe Council	\$179,426
Waratah-Wynyard Council	\$325,722
West Coast Council	\$175,516

Infrastructure, Transport, Regional Development and Local Government Minister Catherine King had this to say "We are delivering our election commitment to prioritise road upgrades in regional, rural and outer urban areas. We have listened to councils and are standing side-by-side with local governments to support them in their vital role in delivering critical infrastructure for their communities."



CHANGE IN OPENING HOURS

Strahan & Zeehan General Practices

Please be aware that due to locum shortages we have had to change the opening days of our practices in both Strahan & Zeehan.

The new opening hours for the next 8 weeks will be as follows:

STRAHAN

Tuesday 9am – 5pm
Wednesday 9am – 5pm
Friday 9am – 5pm

ZEEHAN

Monday 9.30am – 4.30pm
Thursday – 9.00am -4.30pm

We sincerely apologise to all patients these changes will affect. Please note that this is not a permanent change, normal operating hours will be back in places from July 1st.

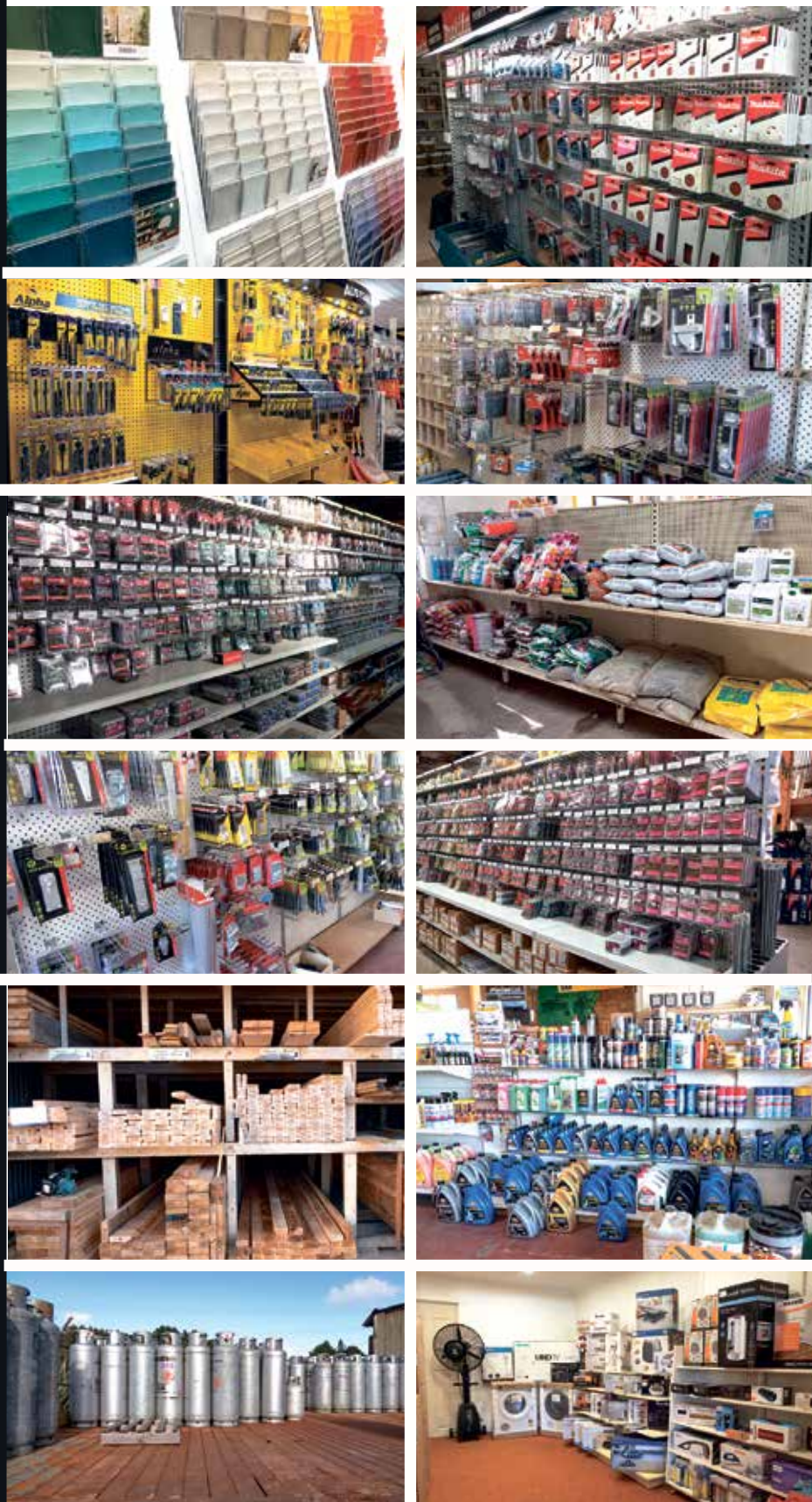


Happy Mother's Day!

Harcourts West Coast wish all Mums a very special Mother's Day filled with lots of love, joy & laughter.

Hardware Zeehan

For all your hardware needs



Timber, Gas, Appliances, Hardware, Auto, Garden, Cleaning, Paint, Oils, Power Tools, Plumbing, and much more



Zeehan Hardware
64716201

128 Main Street, Zeehan Tasmania 7469

Email: zeehanhardware2@bigpond.com

8:00am to 5:00pm, Monday to Friday - Saturday 10am to 12pm

WHAT'S NEWS IN THE STUDY HUB?

It's getting colder as we head toward winter and the days are getting shorter but the Study Hub is full steam ahead with a host of exciting things happening!

Our childcare group of ladies is coming along nicely and last week they completed their First Aid unit of competency. The place was grooving along to trainer Derek's very catchy CPR music "Staying Alive" and there was even a mini competition to see who could be creatively bandaged up.

Of course, the very real learning was to ensure our upcoming childcare staff know how to correctly and effectively respond to a host of first aid situations in an education and care setting.

Kids from Mountain Heights Year 10 HASS class are hard at work preparing an entry into the nationwide Anzac Day Schools' Awards competition. The theme for 2023 is Commemorating Australia's Vietnam War service which aligns with the 50th anniversary of the end of Australia's involvement in the Vietnam War.

Following on from the amazing entry from Rosebery District School last year which won TWO national awards, this year's submission will be just as amazing and unique.

Their entry will be submitted at the end of May - Good luck kids!

Most people have heard of Questacon - it's the interactive National Science and Technology Centre in Canberra. Questacon is a leader in presenting world class creative, interactive science exhibitions and programmes and is a super cool place to visit. Recently, Questacon have visited Tassie for a number of interactive workshops all designed to engage and create interest in Science, Technology, Engineering and Maths in school students.

EXCITING NEWS.... Questacon educators are coming to the West Coast on May 24 to run a FREE profession-

al development STEM workshop for teachers.

It's fantastic that Questacon are interested in supporting our region and we encourage as many teaching staff to take part as possible. Please contact Nicky - nicky@studyhubwestcoast.com.au to take part.

Of course, we really want Questacon to come here for a week to run some cool Science and Technology workshops - this is the first step to show Questacon that we are a region committed to education!

On May 25 the Study Hub is hosting a Cancer Council Australia's Biggest Morning Tea. Our event is community focused to raise vital funds to help make a difference for those impacted by cancer. It's open to everyone on the West Coast and there'll be loads of yummy sweet and savoury treats.

Sadly, all of us have been, or will be impacted by cancer at some point in our lives and we want to do whatever we can to support people in our community.

If you'd like to register to attend, please RSVP Yolande our Students Services Coordinator by May 18 - yolande@studyhubwestcoast.com.au

Alternatively, if you can't come on the day, Yolande has set up a donations page - please email her if you'd like to donate - any amount helps!

With more students utilising the Study Hub, we've created a "Mining" Wall in our back lecture room - it's super interesting - 30 everyday things that mining makes possible. Check it out next time you're in!

Lastly, a big thank you to students and the community for donated text books for our growing and diverse academic library. Students are most welcome to borrow any of them. Our "Little Learner" space (photo below), is also growing thank you to students for contributing with toys, puzzles and books!



19 Goldie Street, Wynyard
www.gloverlegal.com.au

- Conveyancing Specialists assisting with the sale and purchase of homes, vacant land, farms, businesses and commercial properties
- Wills, Powers of Attorney and Estate Planning
- Specialists in all Personal Injuries Claims including motor vehicle accidents, workers compensation and criminal injuries compensation claims

Call for an obligation free quote

1300 762 753

National Volunteer Week 2023: Celebrating the Changemakers

Behind the Mount Lyell Strahan Picnic



Committee members and volunteers at the 125th Mount Lyell Strahan Picnic, 26 January 2023. Photo by Alan Jennison.

As Australia gears up to celebrate National Volunteer Week (NVW) from 15-21 May 2023, the Mount Lyell Strahan Picnic Committee extends its heartfelt gratitude to the dedicated volunteers who have made the annual Mount Lyell Strahan Picnic a cherished tradition for over 125 years. This year's NVW theme, "The Change Makers," perfectly encapsulates the spirit and commitment of the volunteers who organise and run this iconic event in the West Coast of Tasmania.

Driven by their passion for contributing to the greater good and ensuring that the Mount Lyell Strahan Picnic remains an inclusive and accessible celebration for all, the volunteers of the Mount Lyell Strahan Picnic Committee

embody the essence of change makers.

They tirelessly devote their time and energy, transforming their passion for community engagement into purposeful action.

With the support of these selfless individuals, the Mount Lyell Strahan Picnic has become a beloved gathering, offering a diverse range of activities and competitions that delight attendees of all ages.

From traditional races like sack, three-legged, and egg & spoon to uniquely Australian contests such as gumboot throwing and hammering the nail, the event is a true celebration of the West Coast's mining culture and heritage.

The Mount Lyell Strahan Picnic

Committee volunteers work year-round to plan, organise, and execute the event, ensuring its ongoing success. On Picnic Day, they manage everything from setting up the venue to running races, awarding prizes, and providing first aid. Their commitment to the event has helped keep it free of charge and accessible to all patrons, fostering a sense of community pride and ownership.

National Volunteer Week 2023 is an opportunity to acknowledge the impact of these change makers, who are the face behind the social change that the Mount Lyell Strahan Picnic represents.

By celebrating the power of volunteerism, we encourage more people to consider volunteering and join the ranks of these inspirational individuals who make a difference in their communities.

About the Mount Lyell Strahan Picnic

The Mount Lyell Strahan Picnic is a long-standing annual event held at the West Strahan Beach Picnic Grounds on the picturesque West Coast of Tasmania.

The gathering features a wide variety of activities and competitions, including traditional races, treasure hunts, and a special West Coast Spirit Awards Ceremony to recognise outstanding

community contributions. Thanks to the dedicated efforts of the Mount Lyell Strahan Picnic Committee volunteers, the event remains free of charge and accessible to all patrons, creating an inclusive atmosphere that strengthens community bonds.

About National Volunteer Week

National Volunteer Week is an annual celebration in Australia that recognises the vital support that millions of volunteers provide to their communities.

The event, taking place from 15-21 May 2023, focuses on celebrating the power of volunteerism to drive change and ensure that volunteering remains inclusive of all members of the Australian community.

With the 2023 theme "The Change Makers," National Volunteer Week acknowledges the passion and purpose of volunteers who give their time and energy to make a difference.



New netball uniforms thanks to Avebury

Zeehan Junior Netball players are ready to take to the court, with their new uniforms.

With the generous support from Avebury Nickel Mine, the junior participants will look very professional this upcoming season (due to commence this winter).

We cannot thank Avebury enough for their generosity, these wonderful contri-

butions in small communities keep sporting groups like this going. The kids will look fantastic!



Zeehan Primary School cross country run

Another wonderful ZPS cross country with typical 'wet' coast weather! Thanks to everyone for their participation and for families for cheering everyone on! Huge thanks to Miss D'Alton for organising and facilitating!



Prepare, plan and protect this winter

The cooler months bring colds, the flu, COVID-19 and other illnesses. That's why being prepared is the best way to protect yourself and your family.

Find out more at www.health.tas.gov.au/winter-wellness



Prepare

Be prepared by being up to date with your vaccinations – they'll boost your immunity against COVID-19 and the flu to reduce severe illness if you get sick.



Plan

If you're at a higher risk of becoming very sick from COVID-19 or flu, make a plan with your healthcare provider for how you will access testing and antiviral medication if you get sick.



Protect

Protect yourself and others by remembering to wash your hands, cover your coughs and sneezes, and stay at home if you're unwell.



Winter wellness



2023 West Coast Artist Commission and Seed Funding programs



'A Day At The Footy – Rosebery Park Oval' by Grace Garton

The Unconformity is pleased to announce the return of the West Coast Artist Commission and Seed Funding programs for 2023.

Seed Funding Program

The West Coast Seed Funding Program provides funding support for artists and cultural practitioners connected to lutruwita/Tasmania's West Coast.

Individuals or groups can apply for up to **\$2,500** to fund outcomes such as skills development opportunities, infrastructure, project costs, the acquisition of equipment related to creative or cultural endeavours, or travel to attend masterclasses or exhibitions.

In partnership with West Coast Council and with funding support provided through Arts Tasmania by the Minister for the Arts, the total funding pool in 2023 is **\$15,000**. ■

Applications for both programs open on Monday 8 May 2023 at 9am AEST and close on Monday 29 May 2023 at 11:59pm AEST. For more information, visit the website:
ARTIST COMMISSION: theunconformity.com.au/west-coast-artist-commission
SEED FUNDING: theunconformity.com.au/west-coast-seed-funding-program

Artist Commission

The Unconformity offers an annual **\$5,000** acquisitive commission for a West Coast artist or artistic collaboration through the support of Arts Tasmania by the Minister of the Arts.

The commissioned artworks will accumulate to build a local collection representing artists and arts practitioners of the region. The commissions are installed within public buildings around the West Coast in consultation with the artists.

The commission will be a 2D work and is open to artists working in painting, works on paper, print or photography. The commission will display a conceptual connection to the West Coast and be a new and significant work for the artist or collaboration. ■

The Unconformity Art Trail: Register Now



'Three Trains of Thought' exhibition at Station Studios Gallery by artists Chris Wilson (framed pastels) and Renate van Riet (textile). Photographed by Jesse Hunniford.

The Unconformity is pleased to announce that Rosebery-based Nicole Hutchins has joined the organisation as Art Trail Coordinator. She will be working closely with West Coast artists and venue owners to facilitate the delivery of the Art Trail as part of The Unconformity 2023 festival.

The Art Trail presents a wide range of artworks by West Coast-based artists in unique venues throughout Queenstown and provides local artists with the opportunity to publicly present and sell their work during the festival weekend. Past venues have included studios, galleries, shopfronts, available wall space in accommodation and hospitality businesses, empty buildings and domestic spaces such as houses and sheds.

If you are a West Coast-based artist or venue owner interested in participating, you can now register your interest. For more details:

theunconformity.com.au/art-trail ■

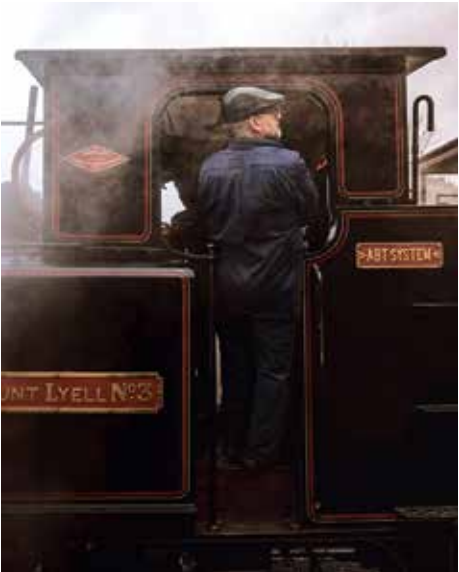
THE **UNCONFORMITY**

West Coast Cultural Strategy Update

The West Coast Cultural Strategy is an action plan that aims to establish a vision and road map for the future of West Coast arts and culture.

The first of its kind for the West Coast, the strategy is intended to provide the general public, artists, audiences, venue owners, festivals, tourism associations, businesses and West Coast Council with a shared vision for sustainable arts and culture in the region.

The West Coast Cultural Strategy is being created by independent research consultancy, Patternmakers, with facilitation by West Coast Council, The Unconformity and WD Booth Charitable Trust.



Survey

The West Coast Cultural Strategy survey is now live and Patternmakers invites you to have your say by taking 10 minutes to fill out the survey online. Alternatively, paper surveys are available at the following locations:

QUEENSTOWN:
West Coast Council Chambers,
11 Sticht Street, Queenstown

STRAHAN:
West Coast Visitor Information Centre,
Esplanade, Strahan

TULLAH:
Tullah Lakeside Lodge, Corner of
Meredith and Farrell Streets, Tullah

ZEEHAN:
West Coast Heritage Centre,
114 Main Street, Zeehan

ROSEBERY:
Rosebery Neighbourhood House,
8 Agnes Street, Rosebery

The goals of the survey are to:

- Test, quantify and prioritise ideas emerging from the consultation.
- Gather additional ideas from consultation participants.
- Provide ways for more people to have their say, including locals who were not able to attend the initial meetings, and those living outside of the region.

By completing the survey, you can go in the draw to win one of three \$200 Mastercard gift cards. You can elect to remain anonymous. The survey is open until Sunday 21 May 2023.

Complete the survey via the website: culturalstrategy.theunconformity.com.au/get-involved ■



Workshop Week: 22–26 May 2023

You're invited to get involved in shaping the strategy in an upcoming 'Workshop Week' from 22–26 May 2023 in Queenstown. A series of thematic workshop sessions will be held across the week to develop strategies and actions in relation to key areas of interest for the community. Refreshments will be provided.

Patternmakers invites you to register for any session which is of particular interest to you, and come ready with your ideas and suggestions. If you are interested in attending but are based outside of Queenstown, Patternmakers are offering \$30 fuel vouchers for West Coast residents, available upon arrival at the workshops. Alternatively, you can register to attend a session via Zoom. To register for a session, head to culturalstrategy.theunconformity.com.au ■

	MONDAY 22 MAY	TUESDAY 23 MAY	WEDNESDAY 24 MAY	THURSDAY 25 MAY	FRIDAY 26 MAY
Key goal	Getting started: Setting up a week of discussion, creative thinking and action planning	Big and bold creativity: Creating an environment where professional arts and cultural practice can thrive	Innovating across different sectors: Exploring ways for culture to make a difference in more parts of the community	An empowered community: Supporting strong and sustainable community engagement and collaboration	A shared vision: Connecting the dots to define a set of priorities for the community
Morning session 9am–11am		Aboriginal culture	Environment	Emerging artist support: co-ops, peer support, professional development	Closing: Review goals, actions and next steps
Lunchtime session 12pm–2pm		Film	Health, aged-care disability and inclusion	Volunteering	
Afternoon session 3pm–5pm		Architecture	Education: Pre-school, Primary, Secondary and further education	Festivals	
Evening session 5:30pm–7:30pm	Welcome: Introducing the Cultural Strategy Workshop Week	Arts and heritage	Tourism	Community communication and collaboration	



T
H
E
O
F
F
S
E
A
S
O
N

THE OFF SEASON IS OPEN TO JUST ABOUT ANYTHING

Tasmania only gets more Tasmanian in the winter. The dark gets darker. The oysters are sweeter. The whisky pours get a little longer. And like dazzled moths, we jostle around crackling bonfires. So whether you want to lose yourself in mind-bending art or a complex pinot, there's no better time to experience our island at its wildest, weirdest and most wonderful. Just be warned. We don't call it the Off Season for nothing.

→ Visit discovertasmania.com.au/off-season

MAY - AUG
2023

S
E
A
S
O
N

TASMANIA

COME DOWN FOR AIR

Public Notices

BP Strahan site upgrades

BP Strahan site upgrades are due to begin on the 1st May 2023.

During this time, the site will be inaccessible and closed to staff and customers, meaning the workshop, shop, and (at this stage) fuel will be unavailable.

Lowes Petroleum is currently trying to source alternate options for unleaded, as diesel can still be purchased on the wharf.

The upgrades will take around 8 weeks.

Workshop bookings are filling up fast, so if you need any work done on your vehicle, get in quick. Management and staff apologise for any inconvenience caused.

'Madison's Curls'



14 year old Madison Lello is cutting her curls to raise funds for the children's charity, Ronald McDonald House Vic & Tas, which she has been utilising for the last thirteen years with regular visits many times a year.

She visits often enough to be classed as part of the furniture! This is one way that Madison can say thank you and give back to this wonderful charity.

She is collecting donations for the month of May and will be getting her curls cut off in Hobart on May 31st.

There is a donation box at Wildz Cafe in Main Street, Zeehan. Thank you in advance.



21 May - Big Happy 50th to Sandy Adlard
28 May - Happy Birthday Stephen Lloyd

The Western Echo would like to wish all the Mothers, Single Fathers and anyone who identifies as a Mother, a very Happy Mother's Day. We hope you are spoiled rotten!



Rosebery Lions Club are calling for expressions of interest in a LEGO MODEL EXPO

If you have built or would like to build a LEGO model and have it displayed then please contact Lee on 0497841825 or Sharon on 0437094177



BOOK A LOOK We'll open just for you!

If the bookshop is closed and you're keen to browse, please call Rick on 0499 848 893.

Or you can always catch us open 12-3pm Wednesday to Friday.
19 Orr Street, Queenstown TAS
Email missingtiger@outlook.com

WEST COAST TAS

Positions Vacant



Visit www.Aveburymine.com.au to view our current vacancies and apply today!

Want to submit an Expression of Interest for future opportunities?

West Coast residents are encouraged to send Expressions of Interest applications to careers@aveburymetals.com.au

MINING AND GEOLOGY ROADSHOW

THE WEST IS REMARKABLE - SO IS ITS GEOLOGY

Engage with experts and on-the-ground specialists from local mines:

- What is the future of mining on the West Coast?
- Discuss the geological history of the West Coast, the impacts of mining socially and environmentally and how mining is adapting as we transition to a green energy future.
- Hear from students about current research into critical metals needed to ensure a sustainable future.
- Discover what a mining career could look like for you!

Have an interest in rocks and minerals? Come along and share your passion!

DATE Wednesday 7 June 2023, 4:30pm-7pm,
Gaiety Theatre, Main Street, Zeehan
FREE event - light refreshments provided

RSVP By 1 June 2023
Email: belinda.martin@utas.edu.au
Eventbrite: scan QR code



STUDY HUB

WEST COAST TASMANIA

UNIVERSITY OF TASMANIA

CODES



Hosted by the Study Hub

When: Thursday 25th May 2023

Where: 6 Frederick Street, Zeehan, 7469

Time: 10.00am

RSVP: yolande@studyhubwestcoast.com.au by 18th May

Cancer Council
Australia's Biggest Morning Tea

Please help us support people impacted by cancer!

ROSEBERY MINE

COMMUNITY NEWSLETTER - MAY 2023

ANZAC Day - Rosebery and Tullah

On 25 April 2023 MMG Rosebery participated in ANZAC Day services at both Rosebery and Tullah.

MMG Rosebery representative's Jill Richardson, Chris Winskill, Andrew Robertson and Laura Moore laid wreaths at the services along with a selection of books to support our local schools and ensure every child has access to texts relating to Australia's involvement in conflict across the world.

Everyone at MMG Rosebery thanks our local RSL and Community Organisations for the work they do to support our return servicemen and their communities.



Visioning Workshop

A reminder that in June 2023, MMG Rosebery in conjunction with the University of Queensland will be holding a Visioning Workshop.

The future of the Rosebery operation remains very positive; however, it is important we also plan for a post-mining future. The workshop is designed to identify a shared vision for a post-mining future for Rosebery and understand stakeholders' preferred approaches to engagement.

If you are interested in participating and supporting Rosebery's transition to a post-mining future, please contact Chris Winskill, Community Relations Advisor – Projects on 03 6473 9372 or via email chris.winskill@mmg.com



Community Consultative Committee

The MMG Rosebery Community Consultative Committee commenced in 2016 as a group of local community and MMG Rosebery representatives working together to establish a positive working relationship between the mine and the community.

The Committee seeks to provide ongoing communication about mining operations, discussions about community concerns and feedback on how our company communicates and handles complaints.

The Committee has taken various forms over the years and in 2022 was reignited following the pandemic. This year the Committee has been strengthened in membership, with a focus on ensuring a diversity of voices and representation.

The Committee is made up of an independent chairperson, a member of the West Coast Council, representatives of Rosebery mine and a range of community members.

Meetings are held quarterly and the first meeting for 2023 will be held in May. Here the Committee will be assessing MMG Rosebery's first round of sponsorship applications and identifying a key community project that can be undertaken to ensure Rosebery is a unique West Coast drawcard for tourism, community and business.

As we move forward, the Committee will also be identifying and assessing our sponsorship applications for amounts over \$2500.00 and providing feedback on the initiatives they think the company should contribute to.

Mount Black Men Shed - Women's Afternoon

By Jill Richardson

Every Tuesday afternoon I have the pleasure of spending time with some of the local ladies of Rosebery at the Mount Black Men Shed.

We play a range of games including Scattagories and Mahjong, and discuss various community needs, happenings and gossip, while enjoying a hot beverage and a biscuit.

I really value the time spent connecting to the community – it helps me better understand what's important to people in our community, which assists us at the Rosebery mine to be better informed and in turn able to deliver better support and programs in the region.



Rosebery Heritage Centre

At the beginning of the year a bush fire impacted the Rosebery mine site, destroyed Mount Black Lodge and damaged the Rosebery Heritage Centre.

We have been working with The Rosebery Development Association on plans to re-open the building so community members and visitors can access the site once again.

Thank you to the volunteers who assisted tidying up the area and helped salvage many items of value. We look forward to keeping the community updated as this project progresses.



Careers @ MMG Rosebery

Current vacancies include:

- MineGem Technician
- Mechanical Maintenance Technician
- Supervisor Mine Maintenance
- Senior Mining Engineer - Production
- Ventilation Engineer
- Geotechnical Engineer

For more information, visit:

WWW.MMG.COM/CAREERS

CONTACT US

COMMUNITY INFORMATION CENTRE
ARTHUR STREET (OPPOSITE BP)
ROSEBERY TAS 7470



1800 767 664



ROSCOMMUNITY@MMG.COM



MMG.COM/HOME/ROSEBERYFUTURE



FOR CARRER OPPORTUNITIES
GO TO: MMG.COM/CAREERS



OPENING HOURS

MONDAY-THURSDAY 9-11AM
OR BY APPOINTMENT



WE GROW

AUTUMN IN THE WEST

by Potty about plants!

As Autumn well and truly settles in across lutruwita/Tasmania and the West Coast the gardening landscape with deciduous trees drop their golden and red leaves bringing a stark reminder that soggy and colder days are afoot. May is a wonderful transitioning time in the garden when the last of summer flowering still make their distinctive mark in the garden.

I've still got full blooms of Dahlias, the last of my cosmos providing a cheery crop in an array of colours and gigantic chrysanthemums dominating a patch and reaching at least a metre high competing with my Sunflowers that have been wonderful and full bloomed this year! The last flush of my roses are also not disappointing me and offer a welcome cheerfulness against a backdrop of stripped branches from my Genko and snowball bushes.

Autumn: in fact, if soils are well cared for and plantings well considered can be a beautiful planned symphony with each seasonal movement building to a crescendo as the weather cools. Autumn gardens can be dynamic and colourful as well as exciting.

May is also a time of wonderful colour bursting to life with Camellias being a real showpiece offering stunning explosions of blooms contrasting against their strong green leaves. Although Camellias have been coming into bloom for several months (usually from autumn) we are only really at the beginning of their season. Expect a succession of glorious into Winter and even lasting through to Spring.

The good news is growing and caring for Camellias is a relatively easy task. So, if achieving a blush of these pink petals in your garden is at the top of your list, consider this a sign that it's time to make the commitment! Camellias do so well on the West Coast and brighten up even the starkest autumn gardens. Varieties of Sasanquas are in flower from Autumn. In Winter, they'll hand the

baton to varieties of Japonicas and Hybrids, and these shrubs carry it until Spring. Apart from their long flowering period, Camellias have a lot to offer gardens. They are fit and healthy plants with few pest or disease problems so they'll be relatively trouble and fuss free. They also offer a rich green foliage which contrasts well with deciduous trees in a garden.

Roses are also a must especially David Austin and Delbard roses; the peachy 'Pat Austins' are breathtaking and a real highlight and French Delbard roses are also a feature in gardens in the West Coast. These roses offer a wonderful autumn flush which, for me, is better than spring; the individual blooms are bigger and they don't scorch in the cooler air. If you look after them, particularly through summer, with regular deep watering, feeding and summer pruning, they will reward you in autumn. Preparing beds for winter planting of roses in the cooler months of May and June is recommended. Preparing the planting holes well will reward you later in the coming seasons - Dig in some compost or well-rotted cow manure to improve soil and sprinkle water crystals and pelletised seaweed. Spread roots over a mound of soil in the base of your planting hole. Fill in with the improved soil and water with seaweed solution until all the air bubbles have stopped.

One also can't go past Salvias. These tough perennials are so smothered with autumn flowers, you can hardly see a leaf. There are hundreds of varieties - all make good fillers for gardens, and flower for such a long time. Mexican sage (*Salvia leucantha*) is one of the best; it grows to one

metre and is good for hot, dry, and frosty gardens yet do remarkably well in Strahan and other pockets of the West Coast.

Flowers last until the onset of winter, then you can prune them back hard. Plant them in a spot with full sun and good drainage.

It is also a great time to be in the veggie garden in May- when the soils are easier to work and growing beds easy to prepare. I like to follow Peter Cundall's recommended planting and sowing guide then add a few extras in for interest.

In my garden I am busy planting my carefully prepared garlics, finishing off the last of my tomatoes in the hot house and prepping the garden for late Autumn and Winter cropping. It's also almost time for bare rooted fruit trees, so start preparing beds now with lots of lovely rich organic matter, a bit of moisture (not hard to achieve in our climate) and some mulch will see the soil absolutely gorgeous by the time your trees are ready to go in! Have a think about what tree varieties you are after including heirloom or unusual varieties as they will need to be ordered and purchased ahead of time.

There's lots to do in the garden. Top up mulch on your veggie patches, herb gardens and ornamental beds, especially important for weed suppression at this time of year. Mulch to a depth of about 7cm after watering the patch. Keep mulch clear of plant stem, especially young seedlings. Choose a low environmental impact, locally sourced mulch that will enrich your soil as it breaks down Using your mulch from composts is a great way to build your soil profiles.

Green manure crops, including

oats, wheat, faba beans and field peas are good to go now. Autumn is a great time to improve that dormant veggie patch and get ready for next seasons heavy feeding plants!

Importantly, plants feel the need for a feed at this time of year. A seaweed tea, or any low environmental impact liquid fertiliser is perfect for the seedlings you've just popped in. Apply to the soil early in the morning and in the concentrations recommended dependent on your choice of fertiliser.

MAY Planting and sowing recommendations"

PLANT: Brassicas and pop the following into your patch: broccoli, cabbage, cauliflower, and Brussels sprouts. Plant some sage with these guys as a great, caterpillar and moth-repelling companion. May is also time to plant early potatoes, broad beans, garlic, Japanese turnip, and winter lettuce. By putting in peas and broad beans now, you are giving them the winter to extend their roots deep. This means that when the weather does start getting warmer and the frosts and fine hail disappear you are ahead of the game. Radish, Swedes, turnips, and spinach will also crop well if planted now. Don't forget spring onions and salad onions either this month.

Set aside a bit of space and pop in an artichoke! These are gorgeous additions to the patch, look amazing and taste pretty good too!

SOW: Broadbeans, English spinach, Asian brassicas and root crops, spring and salad onions, shallots, chives, and green manure crops.

Add some colour and movement to the patch and pop in some pretties, such as dianthus, cornflower, pansy, viola, and verbenas. Having these around your veggies will give some interest to the patch, and act as beneficial insect attractors as well as help supply pollen for bees.

Happy Autumn gardening!



Granville tramway update

The excavator crossing Doc's Creek bridge and another view of our latest discovery the Hidden Falls (photo right).

Just one of six falls that can be viewed along the tramway. They are situated just 200 metres below the Tramway in a section of the six mile creek.

The crew has been working hard to get this walk ready but work has halted for a while on the tramway due to the weather though the track is still able to be walked.

Why not take a hike and make a day of it?



Where am I?



It very rarely shows the correct time but where is it? Which town and what building?

NICKEL NEWS

COMMUNITY NEWSLETTER

ISSUE #7 - MAR/APR 2023

Avebury Nickel Mine



message from the general manager

The weather is cooling, daylight saving is a distant memory and on site we're settling into a period of optimising and formalising our systems and processes to make sure we lock in the great progress already made, and have a firm foundation to accelerate.

We're getting close to full employment in most departments with over 200 people now on site, and the time is right to pull out our procedures, update them for the lessons we've learnt in the last six months, and roll out refresher training to everyone.

Nowhere is this more important than in our safety processes: the team has been working hard to make sure every procedure is underpinned by a risk assessment, and we have been auditing and improving our Principal Hazard Management Plans. There is still much work to do across site to ensure we are all working with the safest system and best tools every day for every job, but in the typical Avebury way our people have jumped into it together to sort out each one.

Progress is evident everywhere on site. It's a busy place with construction underway on our laboratory site, the backfill quarry inside our tailings dam now in progress, and planning underway for our paste fill plant and our on-site batching plant for the cement binder that is used in our cemented rock fill.

We're also setting records: March saw 68,000t of ore delivered from the mine to the ROM pad, an all-time record for Avebury, and over 2,500m of diamond drilling underground by the Swick team, who are really kicking goals. We've brought in a contract production drill from Pybar (with thanks!) to help us build a stock of drilled stopes and we are beginning to build broken ore stocks on the ROM pad as well.

'We passed a wonderful milestone of 10,000 tonnes of concentrate produced on the 21st of March Well done to everyone on site for your great efforts to get us to this point'

In town, you'll see the Main Street camp beginning to come together despite the difficult weather. As I've said in the past, it is very special to me to see the old Renison camp where I started my time in the mining industry, replaced by something clean, modern, and fit not only for our purpose but for a future life after we've finished with it. Well done to Don, Crackles and your team of tradies and keep up the good work!

We have great plans for Avebury, for Zeehan and for the West Coast, and getting the mine up to speed is just the beginning. The Mercury Newspaper ran a series of "Future Tasmania" articles last month, one of which (March 22nd) featured Avebury in a double-page feature. You'll find this and a whole lot more information about Avebury in our display at Wildz Café in Zeehan:

We're building a mine that is smart, clean, and diverse. We want to help the industry get there too and we want the west coast – and our hometown of Zeehan in particular – to benefit from that. We're always listening to the community, and I encourage you to get in touch with your thoughts and your ideas: sometimes the quietest voice offers the brightest idea, so please don't be shy! *Until next time, stay safe!*

John **John Lamb**
Managing Director, Mallee Resources and General Manager, Avebury Nickel Mine

community engagement

It's been a very busy couple of months in our community with the Easter period and then ANZAC Day.

The Zeehan Neighbourhood Centre held their community monthly morning tea which was well attended and Avebury had the opportunity to sponsor the catering for this event.

Round 4 of the Community Sponsorships and Donations Program supported twelve community initiatives.

We provided financial support to the Study Hub West Coast for Rosebery District School Women's Empowerment Event.

A new defibrillator will be purchased for in support of a new community wellbeing initiative in Zeehan - watch this space!

Queenstown Men's Shed will have the opportunity to grow fresh produce with funds to assist a community garden.

Successful Applicants for Round 4

- \$1,500 - Mountain Heights High School
- \$2,000 - Study Hub West Coast
- \$3,000 - Zeehan Golf Club
- \$2,500 - Zeehan Roadrunners Relay For Life Team
- \$2,500 - Rosebery Neighbourhood Centre
- \$1,320 - AusIMM Student Chapter
- \$1,000 - KAZ n' COL Dolls Relay For Life
- \$1,500 - Queenstown Men's Shed
- \$1,500 - Penguin Clay Target Club Inc.
- \$2,800 - Zeehan Primary School
- \$3,000 - Zeehan Mini League
- \$2,000 - Parkrun Australia

avebury extends a warm welcome to Jane Holmes !

Jane has joined us in the newly created role of Site Nurse, a key position in our business supporting the health and wellbeing of our team.

Jane comes to us all the way from Hervey Bay in Queensland and has nursed all of her working life with experience in a variety area including medical, surgical, ortho, oncology, emergency departments, along with lots of rural and remote nursing including mine site nursing.

We asked Jane what she likes best about Avebury, she says " it is a great friendly team and enjoys being a part of developing and implementing health and injury management systems in consultation with team members".

Jane is enjoying getting around and experiencing all the beauty Tasmania has to offer, she loves spending time with family especially grandchildren, having opportunity to travel and does lots of craft in her spare time (we're sure Jane is going to be in her element at the Tasmanian Craft Fair)

As new member of the Zeehan community, Jane is keen to get involved with local community activities, so you will see more of Jane out and about in the future.



new apprentices

In January we commenced a recruitment campaign to source an Apprentice Diesel Mechanic and received an extraordinary response from applicants. The candidate pool was shortlisted to seven local candidates who were all exceptional in their presentation and how they conducted themselves thought the interview – given the chance, we would have genuinely hired them all!

Fortunately, we were able to twist John's arm and increase our recruitment budget from one apprentice position to two positions.

Together with our local Tasmanian provider, KEEN Partners, we are extremely happy to introduce you to our new Apprentice Diesel Mechanics, Lochlan Newell and Brodie Sheahan.

Both Lochlan and Brodie have commenced their Apprenticeships and looking forward to a long and rewarding career with Avebury and the mining industry.

We wish Lochlan and Brodie every success in their training and career!



Brodie Sheahan

CONGRATULATIONS

Vicky McKenzie recently was the recipient of a Commendation Award by the Australasian Institute of Emergency Services in recognition of her outstanding commitment to Ambulance Tasmania and the West Coast Community!

Vicki is one of Avebury's on-site security officers and has been involved with Tas Ambulance for many years.

Congratulations Vicki and thank you for the wonderful work you do in our community and at work.



ANZAC Day 2023



Avebury held an on-site service for employees on shift to pay their respects and commemorate our service men, women and animals. Several employees not on shift also attended site for this service.

Craig Youd performed the Australian National Anthem, and two of our own returned service persons Zoe Faulkner and Liam McArthur laid wreaths in the site garden. The Zeehan RSL Sub-Branch officiated the Dawn and Main Service with volunteers from Swick Mining Services cooking breakfast and also sponsored the catering of lunch.



blasting notice

We would like to make the community aware that as of 17 May, Avebury will be commencing surface blasting within the mine lease.

This will be ongoing for a period of time and may impact traffic on Trial Harbour Road with traffic control measures put in place, known as blast guarding. Avebury adhere to the highest possible safety standards and all required controls will be implemented prior to any blasting being undertaken.

exploration

Surface drilling has commenced on Avebury's exploration lease EL28_1988 west of Avebury and inland from Trial Harbour township.

A small exploration program consisting of x3 200 metre diamond drill holes will be drilled over the next month. The drill holes were planned, following a detailed review of previous drilling in the area and geological modelling.

The holes are targeting a similar host sequence as the Avebury ore body with the hope of inter-

cepting Nickel ore and understanding the geology better to inform further drilling in the future. A local drilling contractor Edrill Australia based in Wynyard was selected to carry out the drilling scope.

Avebury have a strong preference to utilise local companies and people to support our local economy. The drill sites were established next to an existing road using previously occupied drill sites to minimise vegetation disturbance.

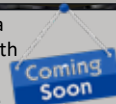
The drilling program will run for approximately one month, then a geophysical survey will be completed using the drill holes at a later date.

If you wish to know more about this exploration program, feel free to contact the Avebury Mine Site.



Drill Rig Site - Trial Harbour

Locals and visitors to our area will be able to get a taste of what Avebury Nickel Mine is all about, with an upcoming display to be installed at Wildz Cafe - Main Street Zeehan. Thank you to Sonia and the team at Wildz for this opportunity.



MALLEE RESOURCES LIMITED

Veterans post

By Linton 'Harry' Harris

Well it's been quite the month, with an awful lot happening relating to this veteran! In the last month, we've been working hard with an all new committee at the Queenstown RSL, getting ready for and then commemorating Anzac day. An almighty effort was made by all involved, and I can't thank the committee enough for their efforts.

Readers of this article may recognise some of the names or faces of the Queenstown RSL committee as four veterans have been featured in the Western Echo in the past.

In actual fact every new member of the committee is a veteran, and consequently we now have a committee that is almost exclusively manned by veterans, all working together for our community and our fellow veterans, as the RSL should be.

We're really excited to engage with the community and on that topic, and following on from last month's article about the 50th Anniversary of the end of the Vietnam War, I was invited to speak with grade 10 kids at Mountain Heights High School, who are entering the Anzac Day schools awards, being supported by the fabulous Nicky Bolt at the Study Hub at Zeehan.

It was great to see the next generation taking an interest in the sacrifices that

veterans have made both in the past and the present and continue to do to this day.

The students, are now planning a unique project that will be entered into the Anzac Day Schools' Awards competition, utilising each others strengths to complete the task - the more hands-on focused students constructing an authentic re-creation of the 'Long tan Cross' while the more tech savvy of the cohort will be working on the visual presentation.

In addition to this, 7XS have been recruited to try and find any surviving West Coast Vietnam Veterans or their families, that may be able assist the students by sharing their stories and photos. Their interactive display will be permanently located at the Queenstown RSL for all to see, the entry is due to be completed by the end of May, so come on in and check it out in June!

As I alluded to above, a lot of effort has gone into the RSL, in preparation for Anzac Day, and the end result was very successful. Being my first term as President, it was important to me, that we created a respectful Service for the Queenstown community, but believe it or not I wasn't actually there!

This year marked the 30th anniversary of my first deployment, and the first



Left to Right - Mark 'Doc' Doran (Army), Andrew Downey (Navy), Clive Starkey (Army), Kate Lovell (Navy), Linton 'Harry' Harris (Army), Christian Roland (Army).

combat deployment of the ADF since the Vietnam War, being deployed to Somalia, Africa, in 1993. Consequently there was a week of events in Canberra, culminating in veterans of that conflict leading the National March to the War Memorial on Anzac Day.

Another highlight of the week was an official garden party at Government House. Quite probably unknown to the majority of Australians, David Hurley DSC, OAM, our current Governor General, has history in that deploy-

ment to Somalia, as he was a young LtCol back then, and the leader of the 1RAR Battalion group. It's been a much talked of tale ever since, that the collective efforts of 1RAR in Somalia, 'made' Governor Hurley's Career, as we watched him soar; first through the ranks, rising to chief of the defence force, and then onwards to the very top spot of Governor General of Australia. It was a lovely event and there were a lot of fantastic reunions between old mates and comrades in arms.

ANZAC Day across the west



ANZAC Day in Waratah



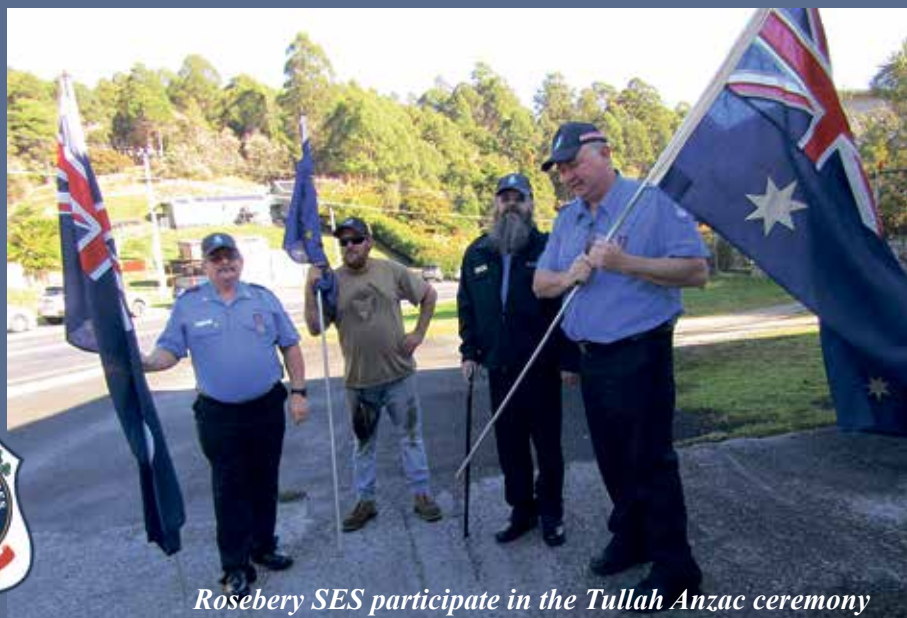
ANZAC Day in Tullah



Around the Cenotaph in Strahan



ANZAC March in Zeehan



Rosebery SES participate in the Tullah Anzac ceremony

Hello from St Joseph's

Welcome to St Joseph's, Queenstown Echo!

In 2023 we are blessed to have five classes: Kindergarten, Prep, Grade 1/2, Grade 3/4, and Grade 5/6. Our intimate class sizes allow every student to learn in a supportive, inclusive way so they can successfully access many opportunities. Every moment we strive to be courteous and considerate through our acts of kindness.



Serving up Smiles!

Last term, students enjoyed a shared meal twice a week provided by Loaves and Fishes. Meals arrive pre-prepared and ready to heat up in our school canteen. From lasagne and spaghetti to meat loaf and cottage pies, every student brought their best table manners to share in a good meal and good conversation. Our meals will continue in Term 2 with new items on the menu.



Along with our shared meals, St Joseph's is proud to offer a Breakfast Club twice a week. Students take advantage of an extra slice of toast, a hot chocolate and even a muffin or on occasion a pancake before school.

SRC Easter Fun!

At the end of last term, our School Representative Council organised some super fun activities! The leaders organised two events for our school: an Easter Disco and an Easter Egg Hunt! Both were very well planned and received by the students as clearly indicated by their dance moves in the hall and their excitement in searching in the Adventure Playground.

Our SRC are very active in our school community, raising awareness and much needed funds to worthy causes like their Term One charity:



Sharing is Caring!

Classes are back visiting the residents in the Lyell Wing at our West Coast Hospital this year with students preparing a range of items including singing, sharing and showcasing work and even speaking one-to-one about times gone by. We are so blessed to be able to once again venture out and spend quality time face-to-face.



Represent!

We are very proud of their efforts and wins across the heats of freestyle, breaststroke and backstroke at last term's Nth West Catholic School Swimming Carnival. Everyone swam their hearts out and represented St Joseph's with pride!

We are all looking forward to our other carnivals later in the year: Cross Country and Athletics!



Student Focused + Christ Centred + Learning for Life



WELCOME MR. SPRADBURY

My name is Wayne Spradbury and I have just started teaching at Mountain Heights. Previously I have helped out at Zeehan Primary, Rosebery District and St Josephs. Prior to that I taught in Launceston, South Australia and South Africa at various schools and colleges. I worked in a chocolate factory, a sugar mill, two hospitals, a maximum security prison as a guard and on the Anglo American mines in Africa as a rock engineer. I have recently sold my walnut farm, "Tamar Valley Walnuts" and moved to the beautiful town of Trial Harbour where I am trying my hand at fishing.

We are very lucky to have Mr. Spradbury joining our school as a maths teacher!



Mr. Spradbury fishing



GRADE PREP/1/2 LITERACY

This term, Prep/1/2 have been working hard writing simple sentences. We started off learning what elements a simple sentence needs such as punctuation and capital letters. All students have been eagerly pointing out punctuation in all pieces of writing we read together, often calling out "there is an exclamation mark".

This new skill has been shown off in so many learning areas such as HASS, literacy, and social and emotional wellbeing. We are all excited to see each other's work grow as we begin to learn grammar such as adjectives, nouns, and verbs as well as compound sentences to make our writing more interesting.

EXCURSION TO THE MUSEUM

On Wednesday the Grade 7 class took a trip to the Galley Museum. We went because we are studying artefacts in HASS.

We went on the bus because it was raining so we headed inside and we were greeted by nice people who work at the museum. We started with our scavenger hunt and we had to find history around the place.

We thought that the manikin with the pumpkin head was scary, as well as the ghost named George.

Michael liked the Hydro Room, Aaron's favourite part was George the ghost and Lillyah liked the room with the billiards table.

We all found out something connected to our own histories. Mia recognised some names from Strahan, Klancy found a picture of her pop, Michael found a picture of his family's dump trucks and Claire found artefacts she had donated herself.

It was a good trip and people were nice. Thank you to Ralph, Raymond and Raymond for letting us visit the Galley Museum!



Grade 7 students and volunteer Ralph at the Galley Museum

PREFECT REPORT

The prefects at MHS have had a busy start to term 2. So far, we have celebrated Anzac Day throughout the Easter holidays. MHS proudly represented our school in the Anzac parade at the 11 O'clock service where we laid a wreath and a card to show our respects.

We would like to thank Miss Emmerich and Mr Sandringham for joining us on Anzac Day and giving us the card and wreath to lay.

The prefects have made a start on organising a social for term 2. We are hoping to hold a primary social and a secondary social in the middle of the term. So stay tuned for details.

By Shelby Wedd, Cobi Williscroft, Charlton Shultz and Aaliyah Harvey



Students at the ANZAC Day service in Queenstown



Strahan Primary School Echo

Student Leadership at SPS

House Captains (Jace and Jett Grade 6)

As House Captains of Macquarie (Jace) and Arthur (Jett) we have many responsibilities such as cleaning the sports shed, running games at recess and lunch and helping set up and pack up sporting events.

I like having the yellow hat; showing I'm House Captain – Jace

I like being in a position of power, because I am one of the sports leaders of the school – Jett

Cleaning the sports shed is pretty hard though – both



Student Representative Council (SRC)

SRC Members are people who help make our school a better place by running fundraisers, events and creating happy memories. The Term 1 and 2 SRC are Hudson (G3), Adele (G5), Sophie (G5) and Logan S (G5)



As SRC members we take student's ideas and turn them into fun events such as: Free Dress Day and Crazy Hair Day. The money that we raise is then donated to Ameliah; our sponsor child through the Smith Foundation.

By Sophie and Logan (SRC G5)

Daily PE

Daily PE is run by the 5/6 students each day before lunch. Students organise equipment and lead Daily PE sessions. The sessions run with a warm up, followed by stretches and then games or activities. There is one focus for each group, each week.

Abbie (G3): I like to play the games because they are fun. I like Daily PE because you get to enjoy it with your friends.

Quinn (Kinder): My favourite thing to do in Daily PE is jumping. I like Daily PE because you get to warm up.

Ary (G3): My favourite thing to do in Daily PE is play games because it's fun. I don't like Daily PE because it's hard.

By Shaylah and Ivy (G5)



Canteen by Suzy and Macy (Gr5)

Strahan Primary has recess and lunch canteen on Tuesdays and Thursdays and is run by the 5/6 students. When in the canteen some jobs we do include organising orders, counting money, preparing food, doing the dishes and cleaning. 4 students from our class run the canteen each fortnight.

Q1: What is the best thing about being in the canteen?

Jessie (G5): I get to make food

Izzy (G6): The cooking

Tyler (G5): Getting out of classroom learning and cooking

Juanita (Canteen Manager): Watching the students enjoy something new

Q2: What is your favourite activity to do in the canteen. (Eg. mixing, cutting, sorting)

Jessie: Cutting the food

Charlie (G5): All of them

Izzy: Mixing

Tyler: Sorting the money

Juanita: I like helping the kids

In 2023 students started to cook delicious canteen food during the middle of last term.



ZEEHAN PRIMARY SCHOOL

Mining for Knowledge

FIGHT MND.
IT TAKES PEOPLE



ZPS BIG FREEZE-May 24-1:30pm

Come and watch people getting 'dunked' with ice for a good cause. Donations welcome!
bit.ly/zpsmnd2023



SCHOOL GARDEN

We have a garden and Nurse Tom has helped us plant potatoes. When winter comes we will use them to make a yummy soup!



THANK YOU AVEBURY

Avebury Mine has contributed to improve the VC Memorial at the front of the school. Sgt. Percy Statton was a former ZPS student.



KP START TERM 2

Miss Young and Kinder-Prep are looking forward to another great Term! Remember that every day counts!



123 START TERM 2

Miss Bonner and 123 are looking forward to another great Term! Remember that every day counts!



80s THEME FUNDRAISER

Our SRC put on an 80s-theme fundraiser fancy dress for last day of Term 1, with money going towards our MND Big Freeze focus.



456 TERM 2 START

Miss Qualmann and 456 are looking forward to another great Term! Remember that every day counts!



EVERY SCHOOL DAY MATTERS

We want to lift attendance rates to pre-pandemic levels > 90% Every day is important for learning. Make every day count!



CHILDREN'S UNIVERSITY @ ZPS

Please contact Miss Warren for a CU Passport and begin receiving stamps for extra-curricula learning. Graduation is in November!



EASTER BUNNY COMES TO LIL

Launching into Learning is on Tuesdays from 10:30-12. Pre-Kinder is from 9-10 if your child commences Kindergarten in 2024.



ANZAC DAY SERVICES

Many of our students proudly represented ZPS at the ANZAC Day march and ceremony here in Zeehan. Lest We Forget.



FAREWELL MRS. MCGEE

Thank you and all the best to Mrs. McGee, our Literacy Coach for the past 3+ years, who returns to her home in QLD and new job.

More than just a stroll in the park

The above heading is not quite true, this would have to be one of the most gruelling treks undertaken in Tasmania, and I had to include it in the Echo. These are the notes written by Isla Mook and her partner, Guillaume. This amazing couple did this without any fuss or fanfare and it is a story showing just what can be achieved with the right mindset. This need to be included in future history books.
Alan - Editor

What was the project?
We hiked from Tasmania's southernmost point, Cockle Creek, to the island's northernmost point, Cape Grim. We followed the west coast for about 550 km, half of which is off trail. It was very difficult to predict the time we will take but our initial estimate was 41 days divided into three sections:
– Cockle Creek to Melaleuca: 6 days
– Melaleuca to Strahan: 25 days
– Strahan to Cape Grim: 10 days.
(The map below differs slightly as this is what we actually did).

Unlike our previous adventures, this one required a lot of preparation beforehand. We had been preparing for several months with internet research, contact with people who have already done the same route (very few people have walked these hostile lands), study of the maps, writing of the road guide, gathering all the necessary equipment, dehydrating food and preparing physically.

On February 18 we went by car to Strahan, the only village crossed by the trek, about halfway (in terms of distance). We leave our vehicle with Jane, an Australian who has kindly offered to keep the car at home. In the car is the food for the last ten days of the trek (section 3).

We are now on foot, with two backpacks each containing the equipment and food for sections one and two. Initially, the objective is to reach Hobart by hitchhiking at 300 km. The journey is done quite quickly, in two cars we were in Hobart.

A new Good Samaritan, Will, meets us there, he takes us to the airport where we deposit our two bags of food planned for section two. The airline company Par Avion goes daily to Melaleuca, in the middle of the national park, to take tourists there. It also offers a parcel drop-off service. On February 20 we hitchhike the 120 km linking Hobart to Cockle Creek.

It is 2 p.m. when we arrive at Cockle Creek, the road does not continue further, we are in the south-west corner of Tasmania. Here are many campers and hikers who come to enjoy this atmosphere at the end of the world.

It is also the official start/finish of the famous South Coast Track, section 1 of our trek. We will pass a lot of hikers the other way, most get dropped off at Melaleuca by plane and hike to Cockle Creek.

We turn on our ZOLEO (a satellite messaging device that also records our GPS position every hour automatically).

Here we go!

South Coast Track

We are in good shape, happy to finally start this adventure that we have been dreaming about and preparing for so long. The first day is quite easy, the path follows well, the landscapes are varied, we walk on beautiful beaches. But from the second day



things get complicated. I was expecting a relatively easy trail, I took the South Coast Track for a kind of little warm up. Well finally we can call it an intense warm-up! Already on section 1 I think to myself that this is the most difficult trail of all the trails I have done in my life. It promises for section 2 which will be off trail! Already I did not expect so many climbs / descents, every day we do between 700 and 1000m of elevation. The trail is extremely muddy, I didn't even know it was possible to get so much mud on a small trail like this.

The mud will follow us until we start the off trail. Fortunately, we are equipped, our gaiters covering all of our shins. But that doesn't mean we have to act as if the mud wasn't there, so very regularly we have to step over, jump, dodge, go around as best we can to avoid getting muddy! Added to this are the branches, dead trees and sharp grasses which happily invite themselves onto the path. A beautiful hodgepodge of obstacles! Besides these difficulties, we are lucky to have 100% good weather on this section, a good boost for morale! We cross magnificent beaches, beautiful fragrant forests, open plains allowing us to admire the horizon, we climb Ironbound Range (973m above sea level), which offers an exceptional 360° panorama. We swim in the Southern Ocean, having fun jumping the waves like children. A river to cross by boat, it brings back memories of the trek in Sweden!

Melaleuca

On the 6th day of walking, we arrive around noon at Melaleuca. Next to the landing/take-off runway is an open deposit room where all parcels are received. It doesn't take long for us to find ours. Too happy, we find our two little backpacks full of food for section 2. But if we're happy, it's because they also contain extras to eat right away! We spend the afternoon eating, enjoying the comforts of a shelter, and visiting the museum and observatory of orange-bellied parakeets, an endangered bird that is being studied extensively here at Melaleuca, last breeding ground of the species.

Port Davey Track
February 26, we start section 2 on the Port Davey Track. Always as much mud, even more (is it possible?). We are very loaded, a backpack of 19 kg in the back each as well as a backpack in the front of 3 kg for me and 5 kg for Guillaume. Left at 8am, we arrive at 8pm, just before dark. A trying day (the first of a long series). The next day we do another 7 km on the trail to Lost World Plateau. This is where the adventure really begins. We leave the trail, compass in hand, heading due west for 10 km!

Lost World Plateau, we leave the trail here!
I'm not going to describe section 2 to you day by day, it would take too long and it would be daunting. We

walked for 23 days without seeing anyone but ourselves, far from any human habitation, far from roads, far from hikers, far from supermarkets. Just Guillaume and Isla, and their 46 kg load!

What does the field look like?
The first days we walked on plains inland (parallel to the coast). The plains offered a few hills that we braved to avoid the watercourses as much as possible (it was above all the vegetation near the watercourses that we avoided). The vegetation varied from short (yay, you can move forward quickly and good humour is there), to thigh level (you have to do knee lifts with each step, it's exhausting). These first days, we were never able to reach the beaches of the coast, a dense forest surrounded the coastline, so we stayed behind.

Shortly before Low Rocky Point, we reached the coast. We then followed it almost the entire way (except for small portions where we knew the coast was impassable). Each type of coastline has a different degree of difficulty:

- Very easy: hard sand beach
- Easy: grassy ground

- Medium: pebble beach (the bigger the better because it is stable)
- Difficult: rocks
- Extremely difficult: wet and sharp rocks
- Almost impossible: ravines.

When we couldn't follow the coast, we walked in the forest or the brush. Often, the brush is the protective part of the trees, it must be faced before having access to the forest. The scrub corresponds to the shrub layer roughly speaking. The shrubs are always very tight against each other, they are often intertwined with fine but robust vines. They are sometimes up to 3m high, not letting us see the exit of the tunnel.

The forests are very varied and once again each type of forest has its degree of difficulty:

- Easy: forest of tall trees that do not allow light to pass through (therefore without vegetation other than trees)
- Medium: forest of tall trees with a few avoidable plant clumps
- Difficult: forest filled with dead wood to step over, dodge, pass under
- Very difficult: open forest filled with vegetation (often sharp or prickly)
- Extremely difficult: forest filled with brush, dead wood

The crossing of rivers

Inevitably, following the coast, we are confronted with all the rivers that flow into the ocean. Their size varied from a trickle of water to a width of several hundred meters. In total, eleven rivers could not be crossed on foot:

Section 1: South Cape Rivulet (swimming because high tide), New River (boat available – South Coast Track).

Section 2: Bathurst Narrows (boat available – Port Davey Track), Davey River (swimming), Giblin River (swimming), Lewis River (detour to find an old bridge), Mainwaring River (swimming), Wanderer River (swimming), Macquarie Heads (by motorboat).

Section 3: Pieman River (by motorboat), Arthur River (by a bridge).

We had trained before the trek in this situation, so our method was perfect and more or less mastered. All you have to do is inflate the sleeping mattress, arrange the bags and shoes on it, hooking the elements well to each other, hook a string to the mattress and connect it to your thigh. All that remains is to jump into the water, swim, and make sure that the mattress follows well and does not turn over.

Little anecdote: on one of the crossings my mattress turned over, my two bags and shoes fell into the water. Luckily, I didn't lose or damage anything. We were pleased to find that 1- even a 20 kg backpack floats and 2- the waterproof storage bags work well (dry feather sleeping bag, dry camera, and drone... OUF!).

The main difficulties

The accumulated mental and muscular fatigue, the cold water of the rivers to swim, fight with the vegetation for 15min to do 10 meters, the climbing or the circumvention of the ravines, the rain and the wind.

Animal sightings

We did not observe many species but each encounter was a special moment. I particularly remember the first time we saw a Tasmanian Devil; he hadn't seen us; we were watching him as we got closer little by little. When we started to get closer, the rain came and scared the devil away... On the whole trek, we saw 7 devils, 6 wombats, 1 marsupial cat, about twenty dolphins (all together), about a hundred



Stroll in the park *continued*

seals (in the same place), about twenty wallabies and kangaroos. Dolphin watching was a special moment. We had landed earlier that day, taking advantage of a sunny afternoon to read on the beach. Between two chapters, I raise my head and discover this school of dolphins just in front of us jumping in all directions.

Don't forget to mention the snakes, the only dangerous animal in Tasmania! We saw about ten tiger snakes, a very venomous species that should not be taken lightly. Its size can be more than 2m long, it is dark black with a yellow line on the belly. They are very present on the coast, on sunny days, sunbathing on a stone or in the grass.

Our gaiters were also used to protect our legs in the event of a bite (but we never had an attack, phew!). Among the less friendly little creatures, we discovered leeches! Especially on rainy days and in forest environments, leeches are everywhere! Of all sizes, they waddle strangely and cling to our shoes as soon as the opportunity arises.



Then they allow themselves to climb wherever they want on our warm human body. It's more effective than any glue this beast!

We used the blue card (a 21st century technique) several times to get rid of some well-attached leeches.

As for mosquitoes and horseflies, they were especially present on section 1 but almost absent when there are no more trails with hikers daily to feed them.

Feelings

We suffered, oh yes! And not just a little! To succeed in an adventure like this, you have to be as strong physically as mentally. When the body is physically exhausted, it's the mind that takes over, not the choice.

The spirit guides, it controls the movements of the body, it controls our words, it motivates us as much as it discourages us. And that's where being two is important.

Together we are stronger, we motivate each other, we give a smile to the one who flinches. Even physically, being two was an advantage.

When the vegetation was ultra dense, we took turns on whoever was leading, making a mark. Moreover, when it was possible, we tried to walk in the tracks of the animals, because it helps!

The last days of section 2 we were both extremely tired, our reactions were excessive, and sometimes neither of us was able to move the duo forward. But we had to hold on, each step, each obstacle passed brought us a little closer to the finish. There was no possible escape.

We arrived at Strahan exhausted, bruised on our legs, but more than happy and proud to have completed this section. However, we should not rest on our laurels because we still had 200 km to go. But before starting section 3, we were able to eat our fill and rest for 3 days.

On a practical level

We drank water directly from the rivers

without filters or tablets. The rivers are numerous, so we never carried more than 3L on us. But three times we suffered from thirst, thinking we would find water regularly, we hadn't anticipated that in the end some parts were drier than others.

You should also bear in mind that the widest rivers are salty...

As for the food, we had planned good portions. So much so that unlike all our previous treks, I never really suffered from hunger. It happened to me to be hungry, but nothing comparable to our crossing of Iceland for example. We cooked and dehydrated the majority of our meals. Examples: salad of carrots and grated cucumbers with hummus, dhal, vegetarian chili, ratatouille...

For the orientation it was quite simple, you had to follow the coast. When we weren't walking on the coast, we used the compass and GPS on the phone. It's amazing how easily you lose your sense of direction in the forest! We take a course,

and 10 meters further we are already more on the right course because we wanted to avoid an obstacle. Knowing that there are obstacles everywhere in the forest, it makes orientation difficult!

Division 3

We resume the trek on Ocean Beach, next to Strahan. We walk on the beach all day, 25 km! This last section of the trek is very different in many aspects. There are a lot of beaches, and very long ones! One day, we walk 32 km on the beach! When there is no beach, there is a 4x4 track parallel to the coast. So, we never had to fight with the vegetation or climb rocks, and so much the better because our legs were no longer in good condition. However, it was not easy either because as we had a rapid progression, we chained the kilometres, calling on other leg muscles. It was quite strange and not necessarily pleasant to come across vehicles. People in their 4x4 were asking us where we were going if we were lost. The further north we were, the more the human infrastructures were felt. Holiday homes springing up like mushrooms here and there along the coast. Gates with 'private property, do not enter' signs. At that time, we were nostalgic for section 2, with no one or anything around. We finally finished the trek in Marawah, about twenty kilometres before the objective because the accesses became impossible mainly because of a gigantic wind farm which holds all this north-western part of Tasmania.

We then did another day of hitchhiking to find our car in Strahan. Trek weight loss report -8 kg for me, -10 kg for Guillaume!

This is an incredible journey by two young people with no support and no help. Congratulations to the both of you.

Well done

Alan - Editor



Greg Wood *QBank artist in residence*

Many of you might have wandered past the Q Bank gallery in Queenstown's main street and wondered why the windows are covered in paper and you can't see what is happening inside.

It certainly does lend an air of mystery but the artist working inside told me it is to cut out external light when he is working late at night. I dropped in for a chat with the artist and found out a bit more about him.

Who are you?

"I live in Castlemaine in Victoria but studied here in Tasmania for four years. I travelled the state a fair bit over that time but the west coast is a real passion of mine."

What are your aims for the residency?

"The west coast has changed so much in the five years since I saw it last, new vegetation all over and mountain bike trails everywhere but the scenery has a deep connection with the way I paint and what I intend to capture."

For me it's a kind of turning back, a sort of re-energising my palette and taking it back with me."

Greg has already produced a lot of work and will be having an open studio at 4pm on Sunday 28th May.

I urge you all to get along and see what is behind those papered up windows .

Alan - Editor

A Zeehan armchair mystery

Many of you might have sat in an armchair and read a mystery book or two, but how about a mystery ABOUT the armchairs themselves?

I have the old supermarket building in Zeehan and was turning off the model trains inside a couple of weeks ago when I noticed something strange out the front of the shop.

Two large brown armchairs were sitting out there, looking for all the world like they belonged and had been there for years. Where had they come from? Why had they been placed there, and by whom?

I put the message out on facebook, to see if anyone could explain it and was

still none the wiser.

The next morning, they were gone! I still don't know the back story but I was kind of liking them there outside my window, and won't be sorry if they do come back as mysteriously as they appeared in the first place.



WE PLAY FOOTBALL

Rosebery Toorak vs East Ulverstone

Photos by Alan Jennison

Season 2023 continues to be a positive one for the Hawks. Whilst neither side managed to record a win in the home games against East Ulverstone both sides continue to improve. Player numbers continue to be positive with only one player needing to double up due to some late withdrawals in the Seniors. The Reserves put in their best effort for the year and it was great to see them halfway through the second quarter only 10 points down. To end the game having had 13 scoring shots shows the hard work 'Whitey' has been putting in is paying off. Chris Baker-Rowbottom continued his great run of form and was awarded the CKM Building services player award. Other best players were Jeremy Salt-er, Jamie Keogh, Reegan Moyle, Jakobi Blake and Baylen Jones.

In the Seniors an entertaining game saw the Hawks 5 points down with 6 minutes to play unfortunately East Ulverstone managed to run away with a 3-goal win. Being 6 points up at half time was a great effort and exemplifies the improvement the Seniors have been showing each week. Allan Drake was once again named best and won the CKM Building Services award. Chris

Baker-Rowbottom was named the Banjos Player of the day after doubling up from the reserves, other better players were Brad Poulter, Will Claessens, Will Huxtable, Rhys Phillips and Trahaarn Takawe.

This week we take on the West Ulverstone Lions and have we have a great opportunity through 2 4 quarter efforts to continue the improvement our teams have shown so far this year.

A reminder at our next home game on the 20th May we have Spida Everett visiting the club, Spida will attend the players breakfast at 10:00 Saturday morning then at the oval being part of a junior clinic at half time in the Seniors (all kids welcome to participate). After the game Spida will be joined by Max Brown as we hold a sports night at the clubrooms including an auction of some sport memorabilia. Tickets are selling fast so see Murf or Sam to organise yours.

A big thank you this week to 2 of our great sponsors in Heene Pty Ltd and Grandville Harbour Farms both these businesses are major sponsors of our club and their support is very much appreciated.

By Duncan Murfet



WE PLAY FOOTBALL

Rosebery Toorak vs East Ulverstone

Photos by Alan Jennison



QUEENSTOWN
EST. **IGA** 1898
EVANS



PHONE 6471 1122
admin@evansiga.com

WE PLAY HOCKEY

Photos by Alan Jennison

Rosebery Women's Hockey has returned for another exciting season.

Second game played on Saturday the 6th of May between the Blues and the Browns.

Rain holding off for the entirety of the match, a relief for most of the players.

The ground was in good condition, wet in sections, overall great to play on.

Both sides giving it all that they had, playing exceptionally well in defence and applying pressure through the mid field. It was some great competition.

Terrific to see some returning players and first season players showing some true potential.

Browns defeating the Blues 3/0

Next weeks game between the Shamrocks and the Browns starting at 10am. Held at the Gepp street hockey ground.

Come along and support our local women's hockey association.

Elizabeth Youd



The Confluence Hotel Where the King and Queen meet



Open 11 am 7 days week. Meals served 11am till 8.30pm
Bar open 11am till late - curfew in by 9.30pm
Buffet breakfast \$15p/p 4.30am till 8.30am

Mt Lyell Motor Inn - Room Bookings - 6453 5000 1-5 Orr St, Queenstown